

# SEAM FRICTION HINGE

## Stainless Steel 316

- Revolutionary technology designed into hinge barrel construction creates constant torque.
- Designed to hold door open without any torque adjustment.
- Ideal for different sizes of doors like overhead door, bait well lid, glove box, access door, interior door, anchor locker, electronic panel, hatch etc.
- Passed 10,000 times cycle test and lost less than 20% on torque; 20,000 times lost 25% or less only.
- Passed 500 hours salt-spray test.
- #6 R/H fasteners are required.

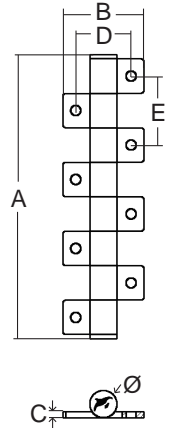
Patented



0419621  
Short Leaves



0419626  
Long Leaves



Bulk No.	Leaf	A mm	B mm	C mm	D mm	E mm	Ø mm
0419619	S	51(2")	28.2(1-1/8")	2(1/16")	19.2(3/4")	24(1-15/16")	9.5(3/8")
0419620	S	75(3")	28.2(1-1/8")	2(1/16")	19.2(3/4")	24(1-15/16")	9.5(3/8")
0419621	S	99(3-7/8")	28.2(1-1/8")	2(1/16")	19.2(3/4")	24(1-15/16")	9.5(3/8")
0419622	S	123(4-7/8")	28.2(1-1/8")	2(1/16")	19.2(3/4")	24(1-15/16")	9.5(3/8")
0419623	L	53.8(2-1/8")	45(1-3/4")	2(1/16")	35(1-3/8")	25.4(1")	9.5(3/8")
0419625	L	79.2(3-1/8")	45(1-3/4")	2(1/16")	35(1-3/8")	25.4(1")	9.5(3/8")
0419626	L	104.6(4-1/8")	45(1-3/4")	2(1/16")	35(1-3/8")	25.4(1")	9.5(3/8")
0419629	L	130(5-1/8")	45(1-3/4")	2(1/16")	35(1-3/8")	25.4(1")	9.5(3/8")

